

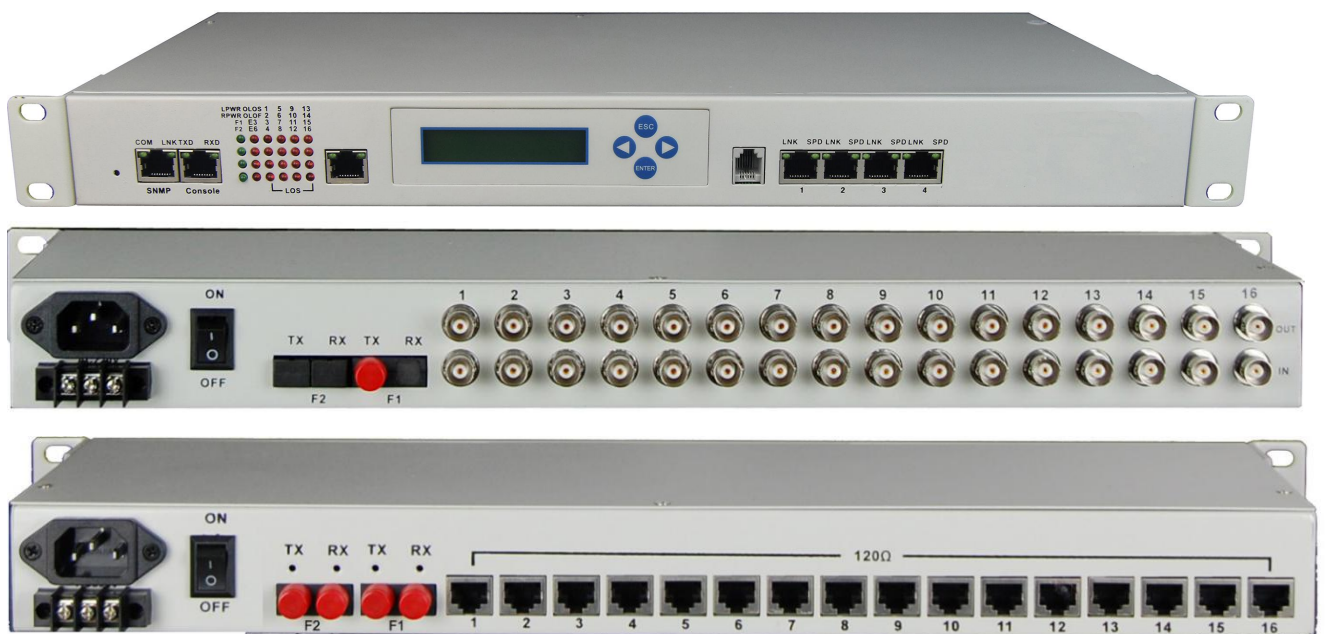


LCD display 16E1+4FE PDH Fiber Multiplexer

Overview

This device has the console control , provides the 1+1fiber path protection ,point to point optical transmission, LCD display , on the basic of our company development of the PDH optical transmission, use the special VLSI and the SNMP NMS. The device provides 1-16*E1 interface, 1-4*10M/100M Ethernet interface (Wire Speed 100M) and 1 expansion interface. 4* Ethernet interface is switch interface, can support VLAN. 1 expansion interface can be used as the transmission channel of RS232/RS485/RS422 asynchronous data. It is very flexible. It has alarm function. The work is reliable, stable, and low power consumption, high integration, small size.

Product Photo



Features

- Based on self-copyright IC
- With char 16*2 LCD display and SNMP agent inside
- Modular wide dynamic optical detector
- Provide Console manage interface (RS232)
- Provide two fiber interface 1+1 protect (APS) function ,and ALS (Automatic Laser



Shutdown/Reduction) function

- Ethernet interface rate is 10M/100M, half/full duplex Auto-Nego
- Ethernet package size support 1916 byte and 4 Ethernet port could be set separately, and ethernet bandwidth can be setting base on multiple of 32K
- E1 interface comply with G.703, adopts digital clock recovery and smooth phase-lock technology
- Uses standard 2 wire telephone (non-telephone handles) set as engineering order-wire hotline(optional)
- When optical lose signal, it can detect the remote device is power off or fiber is disconnected, and indicates alarm by LED
- The local device can view the remote device working condition
- Provide command the remote interface Loop Back, support local E1 Loop Back function, support E1 LOS and AIS alarm ,ease line maintenance
- The transmission distance is up to 2-120Km without interruption
- Support SNMP manager (SNMP agent inside)
- AC 220V, DC-48V, DC24V can be optional
- DC-48V/DC24V power supply polarity detection function, Polarity-Free

Parameters

◆ Fiber

Multi-mode Fiber

50/125um, 62.5/125um,

Maximum transmission distance: 5Km @ 62.5 / 125um single mode fiber,attenuation (3dbm/km)

Wave Length: 820nm

Transmitting power: -12dBm (Min) ~-9dBm (Max)

Receiver sensitivity: -28dBm (Min)

Link budget: 16dBm

Single-mode Fiber

8/125um, 9/125um

Maximum transmission distance: 40Km



Transmission distance: 40Km @ 9 / 125um single mode fiber, attenuation (0.35dbm/km)

Wave Length: 1310nm

Transmitting power: -9dBm (Min) ~-8dBm (Max)

Receiver sensitivity: -27dBm (Min)

Link budget: 18dBm

◆ E1 Interface

Interface Standard: comply with protocol G.703;

Interface Rate: 2048Kbps±50ppm;

Interface Code: HDB3;

E1 Impedance: 75Ω (unbalance), 120Ω (balance);

Jitter tolerance: In accord with protocol G.742 and G.823

Allowed Attenuation: 0~6dBm

◆ Ethernet interface(10/100M)

Interface rate: 10/100 Mbps, half/full duplex auto-negotiation

Interface Standard: Compatible with IEEE 802.3, IEEE 802.1Q (VLAN)

MAC Address Capability: 4096

Connector: RJ45, support Auto-MDIX

◆ Working environment

Working temperature: -10°C ~ 50°C

Working Humidity: 5%~95 % (no condensation)

Storage temperature: -40°C ~ 80°C

Storage Humidity: 5%~95 % (no condensation)

◆ Specifications

Model	Model Number: FCP-LE16F4
Functional Description	16E1+4FE PDH ,19"inch 1U,LCD display, Optional(hotline telephone , Console+SNMP,1+1 fiber back up)
Port Description	1+1 optical port, 16 E1 interfaces (75/120 ohms), 4 FE interfaces,1*RS232



飞畅科技

Future Technology Hang Zhou FCTEL Technology Co., Ltd

PDH Multiplexer

	Console interface,1*SNMP Ethernet interface, one engineering order-wire telephone interface
Power	Power supply: AC180V ~ 260V ; DC -48V ; DC +24V Power consumption: ≤10W
Dimension	Product Size: 19 inch 1U 483X138X45mm(WXDXH)
Weight	3KG

Application

