



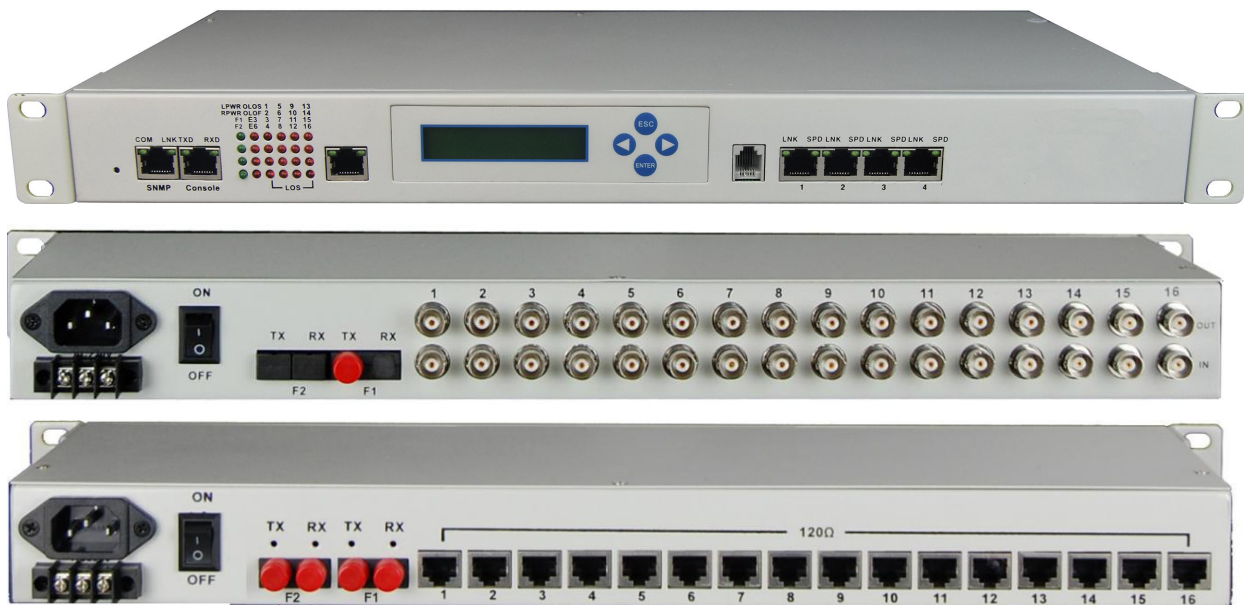
LCD Display 16E1+4FE(Physical isolation)

PDH Fiber Multiplexer

Overview

This device has the console control , provides the 1+1fiber path protection ,point to point optical transmission, LCD display , on the basic of our company development of the PDH optical transmission, use the special VLSI and the SNMP NMS. Provide 1-16 E1 interfaces, primary and backup fiber optical interface connector, 1-4 physical isolation 10/100M Fast Ethernet interface (independent four-wire speed 100M,total bandwidth is 4*100M), as well as one business expansion interface. 1 Extended service interface can be used as RS232 / RS485 / RS422 asynchronous data , the application is very flexible. Optional one digital service telephone, the application is very flexible. With a sound alarm function, the whole stable, reliable, low power consumption, high integration, small size.

Product Photo



Features

- Based on self-copyright IC
- With char 16*2 LCD display and SNMP agent inside
- 1-4 physical isolation 10/100M Fast Ethernet interface , every FE Ethernet



independent wire speed is 100M, total bandwidth is 4*100M;

- Provide Console manage interface (RS232)
- Provide two fiber interface 1+1 protect (APS) function
- Ethernet interface rate is 10/100M, half/full duplex Auto-Nego
- Ethernet package support jumbo frames, up to 10240 byte
- E1 interface comply with G.703, adopts digital clock recovery and smooth phase-lock technology
- Uses standard 2 wire telephone (non-telephone handles) set as engineering order-wire hotline(optional)
- When optical lose signal, it can detect the remote device is power off or fiber is disconnected, and indicates alarm by LED
- The local device can view the remote device working condition
- Provide command the remote interface Loop Back, support local E1 Loop Back function, support E1 LOS and AIS alarm ,ease line maintenance
- The transmission distance is up to 2-100Km without interruption
- Support SNMP manager (SNMP agent inside)
- AC 220V, DC-48V, DC24V can be optional
- DC-48V/DC24V power supply polarity detection function, Polarity-Free

Parameters

◆ Fiber

Multi-mode Fiber

50/125um, 62.5/125um,

Maximum transmission distance: 5Km @ 62.5 / 125um single mode fiber,attenuation (3dbm/km)

Wave Length: 820nm

Transmitting power: -12dBm (Min) ~-9dBm (Max)

Receiver sensitivity: -28dBm (Min)

Link budget: 16dBm

Single-mode Fiber

8/125um, 9/125um



Maximum transmission distance:	40Km
Transmission distance:	40Km @ 9 / 125um single mode fiber, attenuation (0.35dbm/km)
Wave Length:	1310nm
Transmitting power:	-9dBm (Min) ~-8dBm (Max)
Receiver sensitivity:	-27dBm (Min)
Link budget:	18dBm

◆ E1 Interface

Interface Standard:	comply with protocol G.703;
Interface Rate:	2048Kbps±50ppm;
Interface Code:	HDB3;
E1 Impedance:	75Ω (unbalance), 120Ω (balance);
Jitter tolerance:	In accord with protocol G.742 and G.823
Allowed Attenuation:	0~6dBm

◆ Ethernet interface (10/100M)

Interface rate:	10/100 Mbps, half/full duplex auto-negotiation
Interface Standard:	Compatible with IEEE 802.3, IEEE 802.1Q (VLAN)
MAC Address Capability:	4096
Connector:	RJ45, support Auto-MDIX

◆ Working environment

Working temperature:	-10°C ~ 50°C
Working Humidity:	5%~95 % (no condensation)
Storage temperature:	-40°C ~ 80°C
Storage Humidity:	5%~95 % (no condensation)

◆ Specifications

Model	Model Number: FCP-LE16WF4
Functional Description	LCD Display,16E1 PDH , 4 * Ethernet physical isolation (total Band width 4*100M),19"inch 1U ,Optional(order wire phone ,Console , SNMP ,1+1 Back up Optic fiber)



飞畅科技

Future Technology Hang Zhou FCTEL Technology Co., Ltd

PDH Multiplexer

Port Description	1+1 optical port, 16 E1 interfaces (75/120 ohms), 4 FE interfaces, 1*RS232 Console interface, 1*SNMP Ethernet interface, one engineering order-wire telephone interface
Power	Power supply: AC180V ~ 260V ; DC -48V ; DC +24V Power consumption: ≤10W
Dimension	Product Size: 19 inch 1U 483X138X45mm(WXDXH)
Weight	3KG

Application

